

**VESA mount accessory PV02 –  
for XG41/XH61(V) series Slim PCs**

Its optional VESA75/100 wallmount allows the Shuttle Slim-PC XG41, XH61 and XH61V to be installed on to walls or just affixed on the rear side of a monitor which is particularly interesting for the industry segment, company buildings and public institutions.

**Shuttle Accessory  
PV02**



**Feature Highlight**

<b>Scope of delivery</b>	<ul style="list-style-type: none"> <li>• VESA mount</li> <li>• 2 screws</li> </ul>
<b>Material</b>	<ul style="list-style-type: none"> <li>• Metal, black</li> </ul>
<b>Dimensions</b>	<ul style="list-style-type: none"> <li>• approx. 22 x 10 x 8 cm WHD</li> <li>• (without mounting screw)</li> </ul>
<b>Compatibility</b>	<ul style="list-style-type: none"> <li>• Compatible with Shuttle XG41, XH61 and XH61V Slim-PC series</li> <li>• Supports 75 and 100mm VESA standards</li> </ul>



Article number: PV02  
Order number: POI-PV02



Mounting screw

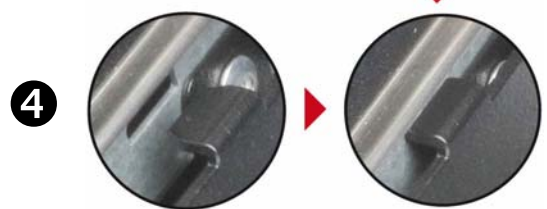
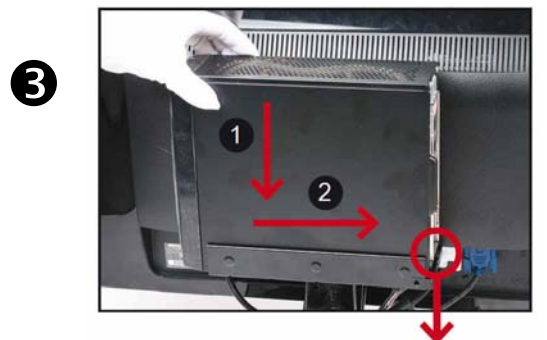
Images for illustration purposes only.

## VESA Mount (PV02) – Quick Installation Guide

Please install with reference to the following steps:

Due to safety reasons, please turn off your computer completely first and unplug it from the power supply.

- ❶ Please unpack the PV02 VESA mount accessory and two screws.
- ❷ Fasten the VESA MOUNT at rear of LCD monitor with two screws.
- ❸ As shown, install the Slim PC in the VESA MOUNT and push it towards the direction as indicated by the red arrow.
- ❹ Slide the latch into the lock position.
- ❺ Check that it is properly aligned, then tighten securely with one thumbscrew.



©2009 by Shuttle Computer Handels GmbH (Germany). All information subject to change without notice. Pictures for illustration purposes only.