

OpticPro A360

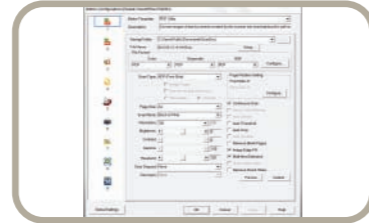
❖ SOFTWARE



plustek
DI Capture

PlusTek DI Capture

Image capture and management software featured with indexed archives. Makes it easy manage and organize documents and images efficiently. Exports files in PDF, JPEG, TXT and XLS with flexible file naming options.



DocAction

PlusTek DocAction

Button utility to simplify document scanning. DocAction enables you to specify your personalized scanning configuration settings and scan documents with the touch of a button. Scanned documents are automatically sent directly to Printer, Email, Folder or FTP. DocAction also enables you to scan directly to many imaging and document management applications. DocAction saves scanned documents in all common imaging formats including: JPEG, TIFF, and PDF.



Readiris
CORPORATE 10

Readiris Pro 10 Corporate Edition

Optical Character Recognition software with a simple user interface, supports recognition up to 117 languages, saves recognized files in 14 text formats and 6 image formats, and has the following features.

- Automatically divides scans of multiple documents into multiple files.
- Adds recognition for bar codes and even hand-printed text.

Hardware Requirements

Pentium IV 2.0 GHz processor (Pentium IV 3.0 GHz processor recommended)
CD-ROM Driver
One available USB Port (USB 2.0 recommended)
1GB RAM or higher recommended
800 MB free HDD space (1 GB or larger recommended)



Specification

Image Sensor	CCD
Hardware Resolution	600 dpi x 1200 dpi
Scan Modes	Color: 48-bit input, 24-bit output Grayscale: 16-bit input, 8-bit output B/W: 1-bit output
Color Depth	Input 48-bit; Output 24-bit
Scanning Speed	2.48 sec (Color mode, 300dpi, A3) 1.65 sec (Grayscale/ B&W mode, 300dpi, A3)
Scanning Area (W x L)	Max. 304.8 mm x 431.8 mm (12" x 17"), A3
Daily Duty Scan (Sheets)	2,500
Action Button	Scan, OCR, Copy, File, Email, Custom1 & Custom2
Power Supply	24 Vdc/ 0.75 A
Power Consumption	< 36 W (operation), < 8 W (idle)
Interface	USB 2.0
Net Weight	7.7 Kgs (16.96 Lbs)
Dimensions (W x D x H)	623 x 400 x 133 mm (24.53" x 15.75" x 5.24")
Protocol	TWAIN Compliant
OS	Windows 2000 / XP / Vista / 7

Headquarters: sales@plustek.com

OpticPro A360

plustek

OpticPro Series

New resolution for hyper-speed for A3 size large format document scanning!



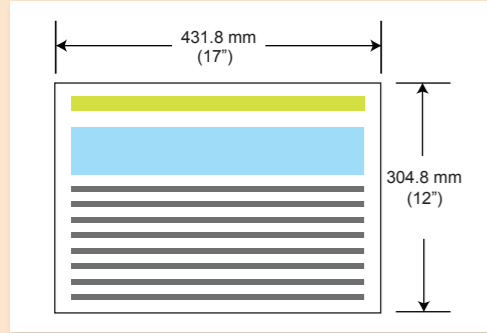
The PlusTek OpticPro A360 is a high speed, 600 dpi scanner that can scan an A3 sized page in 2.48 seconds. It is ideal for graphic designers, publishing companies, libraries, schools, small office/home office (SOHO) users and others that require high speed, large format scanning.

❖ KEY FEATURES

- **Large format scanning area (A3 size, 304.8mm x 431.8mm or 12" x 17")**
- **Hi-speed scanning**
- **One-touch button design to personalized the program**
- **Compatible with most imaging applications**
- **User-friendly software bundled**

❖ FEATURES

Large Format Scanning



The Plustek OpticPro A360 is designed to meet the most demanding large format scanning requirements. It features 600 dpi resolution and can scan an A3 size (304.8 x 431.8 mm / 12" x 17") size page in 2.48 seconds.

Easy to Use



One touch buttons simplify scanning tasks and increase scanning speed and efficiency. All scanning is done using the scanner buttons. There is no need to go back and forth between your computer screen and the scanner to scan additional pages.

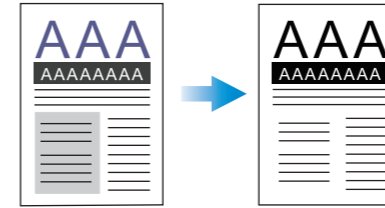
Compatible with Most Imaging Application



Industry standard TWAIN and WIA drivers combined with TIFF, JPG, PDF and Microsoft Office file formats ensure compatibility with thousands of scanning and imaging programs. I.R.I.S. Readiris is included to easily create and manage searchable PDFs.

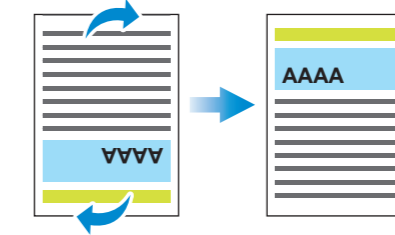
Auto Threshold

Automatically thresholds the current image into a binary black and white image.



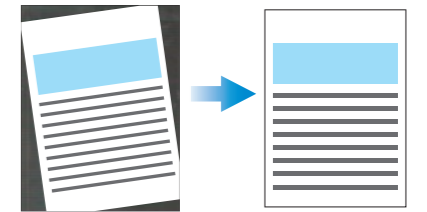
Auto Rotate

Automatically rotates document based on the contents of the document.



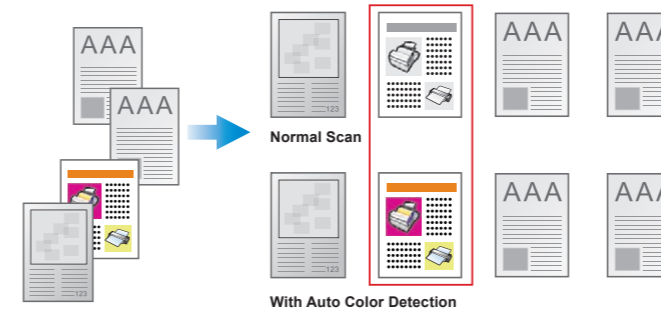
Auto Crop & Deskew

Automatically straightens and crops image to the documents actual size.



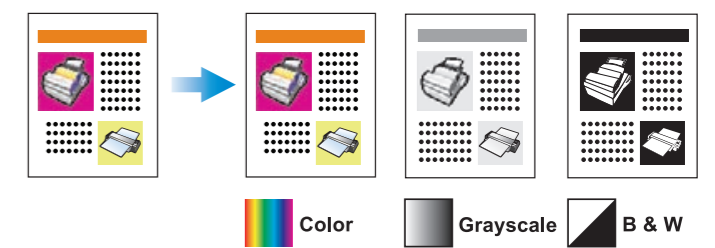
Auto Mode

Automatically detects document color and scans document in color, grayscale or black & white mode.



Multi-Image Output

Scans and saves documents in 2 or 3 color modes at same time.



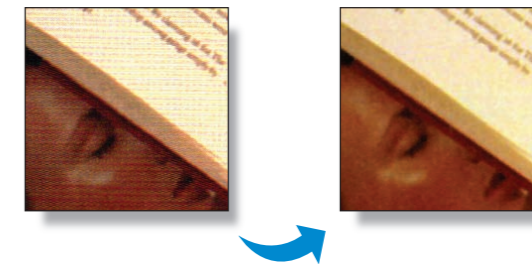
Color Dropout

Removes red, green or blue color when scanning forms.



Descreen Filter

Removes moiré pattern when scanning newspaper or magazine.



Supports document scanning up to A3 size.



2.48 fast scanning speed for color scans at 300 dpi A3 size.



Single touch buttons simplify your scanning work and increase efficiency.



Automatically straightening an image that has been scanned, to make the scanning job more pleasant and enjoyable!



Provide automatically removal of the outer parts of scanned image, to improve framing without using any extra image editing software.



Save paper documents as searchable PDFs at the touch of a button and find your information faster.