

17" Rear Mount TouchMonitor



World Leading
GENERAL
Touch Solutions
Touch Provider

17" Rear Mount TouchMonitor

GeneralTouch's Rear-Mount LCD monitors are designed for easy integration into kiosks, gaming and amusement products where compact displays are required. Being totally designed in house by GeneralTouch, all aspects of the design from the mechanical parts to future upgrading of the LCD panels can be controlled so as not to change the overall form, fit and function which in turn means no external changes for our customers.

The RTL173 features pending IP64 glue seal at bezel edge to protect against dirt, dust, spill & liquids

When design space is limited, the RTL173's slim profile and optional mounting solutions make it the ideal choice.

Features

Slim profile with unique narrow borders

Long lasting product cycle: Mechanical parts controlled in house by GeneralTouch so that future upgrades do not bring external size changes

Multiple mounting options including Rear Mount and VESA mounting

Supplied with GeneralTouch's unique SAW touch screens

Fast Touch response time

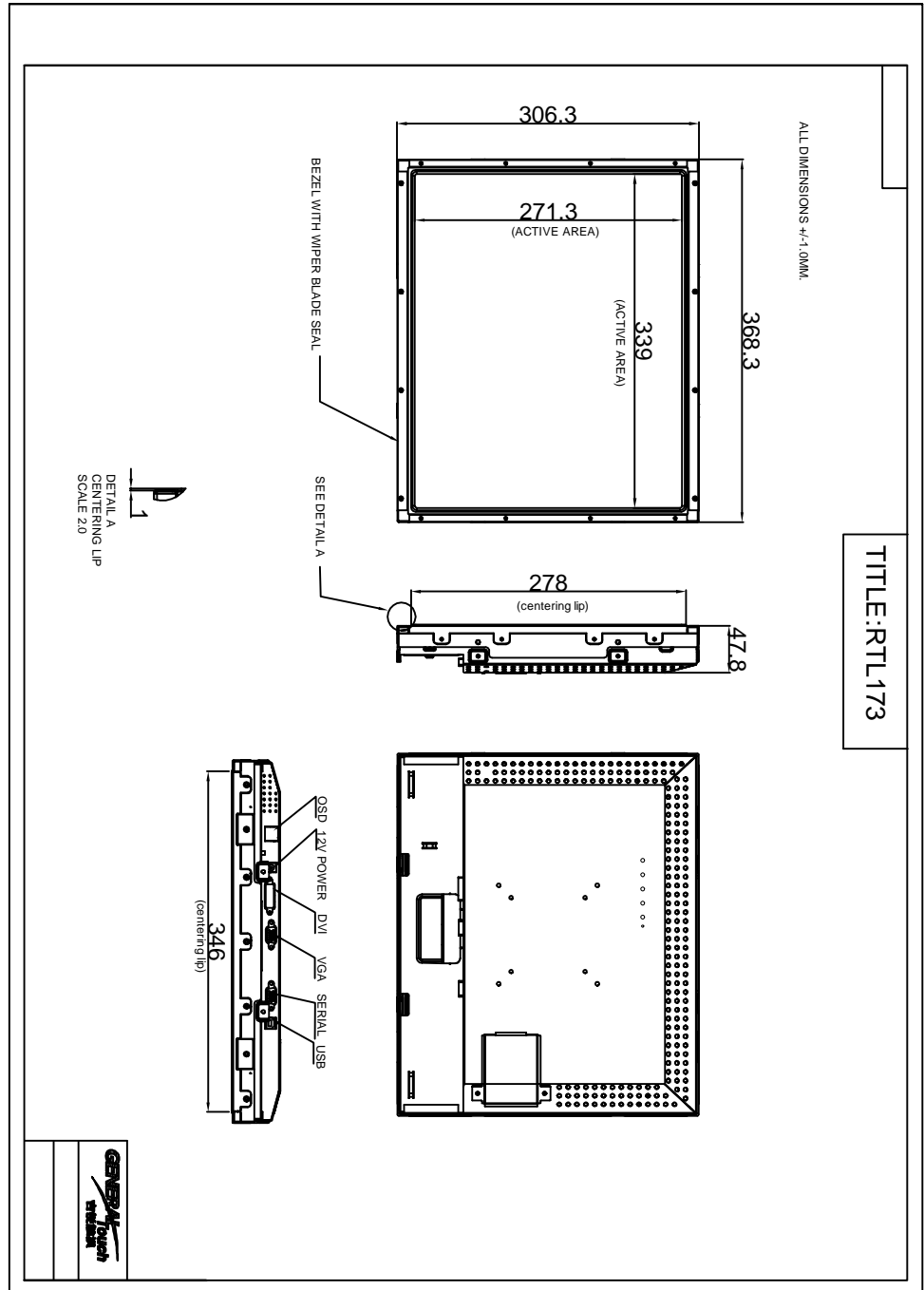
Supplied with Serial and USB touch interface

Multilingual and detachable On Screen Display (OSD)

TouchMonitor Datasheet

Rear Mount RTL173

RTL173 Drawing

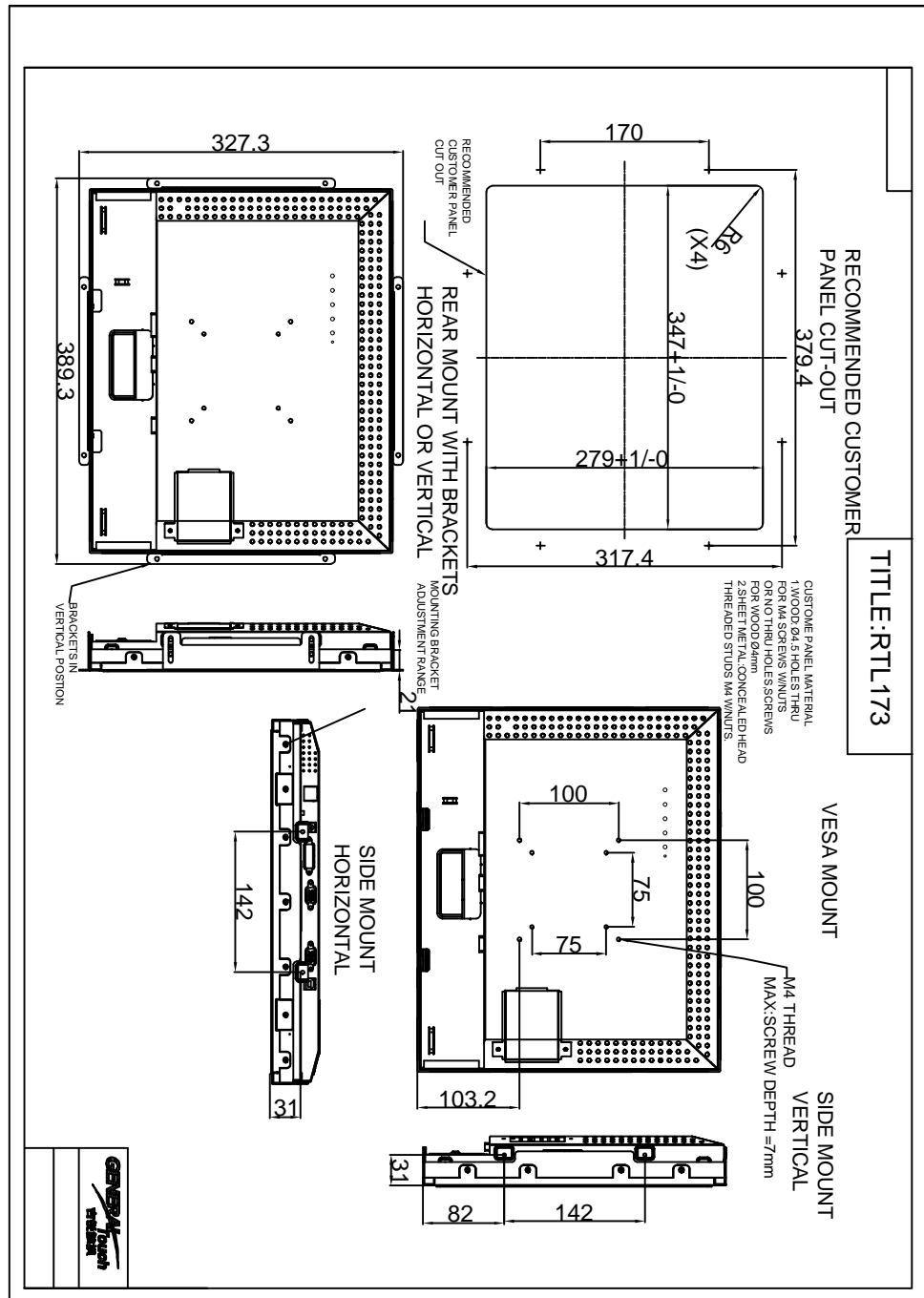


World Leading
GENERAL TOUCH
Touch Solutions
Provider

TouchMonitor Datasheet

Rear Mount RTL173

RTL173 Drawing



World Leading Touch Solutions Provider

TouchMonitor Datasheet

Rear Mount RTL173

Available Touchscreen options

Saw Touchscreen Type	BevelTouch
Glass Type Thickness	Normal Strength 4mm
Surface Treatment	Clear (polished)

Accessories

Serial and USB cable
VGA Video cable
DVI video cable(Optional)
Power Supply Adaptor
Power Lead (US,EU or UK type)
Software CD
User Manual (English only)

Typical Applications

Gaming/Casino Systems
Information Kiosks
Entertainment
Self Service
Industrial

World Leading
GENERAL Touch Solutions
Touch Provider

TouchMonitor Datasheet

Rear Mount RTL173

Specification

Model	RTL173	
Description	17" TFT Rear Mount Touch Monitor	
Case/Bezel Colour	Black	
Touchmonitor Performance	Standard	
Display Type	4:3 Ratio 17" Active Matrix TFT LCD	
Active Display Area	338mm x 270mm	
Native Resolution	1280 x 1024 @ 60Hz	
Synchronization Range	30-80 KHz horizontal, 60-75 Hz Vertical	
Pixel Pitch	0.264 x 0.264 mm	
Pixel Response Time	Rise + Fall (Typically)	8ms
Plug and Play	VESA DDC 1/2B	
On Screen Display (OSD)	Internal Interface Cable	
Colours	16.7 million	
LCD Brightness	250cd/m2	
Contrast Ratio	Typically	1000:1
Viewing Angle	Horizontal (left/right)	160° (80°/80°)
(From Centre, CR>=10)	Vertical (up/down)	160° (80°/80°)
Backlight Lamp life	Hrs to ½ brightness	50,000
Input Video Format	Analog(VGA)/optional DVI	
Touch Technology	Surface Acoustic Wave (SAW)	
Touchscreen Interface	Dual Serial/USB	
Touch Response Time	Serial/USB	10.4ms/10ms
Touch Sensitivity	Fixed	
Monitor Dimensions	368.3x306.3x47.8(mm)	
Shipping Carton Dimensions	491x430x190(mm)	
Weight (approximately)	Monitor/Shipping	4.6kg/7kg
Mounting Options	Rear Mount, VESA 75 & 100mm, Included	
Power Supply	External: 100-240V, 50-60 Hz	
Power Consumption	50 W Max	
Temperature Range	Operating:0°C-40°C, Storage:-20°C-60°C	
Relative Humidity	Non Condensing	Operating:10%-90%, Storage 5%-90%
Warranty*	3 years*	
Agency Approvals	FCC, CE, UL, RoHS,CCC	

*Except for LCD panel 1 year

GeneralTouch Technology Co., Ltd
 NO.6 Keyuan South Road, High-Tech Zone,
 Chengdu, China
 Zip Code: 610041

Tel: (86)28-85124114
 Fax: (86)28-85124115

GeneralTouch Technology-USA Co., Ltd
 11860 Goldring Road, Unit A, Arcadia, Ca91006, USA

Tel: (626)359-3412
 Fax: (626)359-3464

Email: sales@generaltouch.com

GeneralTouch Technology Co. Ltd. reserves the right to change or update, without notice, the information contained in this document and to discontinue or limit the production and distribution of any products.

Touch Your IMAGINATION Today