

## 17" Open Frame TouchMonitor



World Leading  
**GENERAL**  
Touch Solutions  
Provider

## 17" Open Frame TouchMonitor

GeneralTouch's Open Frame solutions include an extensive product line of entry level & industrial grade LCD displays. They are designed for easy integration into kiosks, gaming and amusement applications where compact, displays are required. When design space is limited, the OTL173's slim profile and optional mounting solutions are the ideal choice. The OTL173 is integrated with GeneralTouch's unique patented SAW DustPro or WaterPro frames. Anti-vandal touchscreens are available for special applications.

Open frame products from GeneralTouch will make your next project a design success.

### *Features*

Cost effective touch monitor solution

Long lasting product cycle: Mechanical parts controlled in house by GeneralTouch so that future upgrades do not bring external size changes

Supplied with customized mounting brackets

Supplied with GeneralTouch's patented DustPro, WaterPro and or anti-Vandal touchscreens

Fast Touch response time

Supplied with Serial and USB touch interface

Multilingual and detachable On Screen Display (OSD)

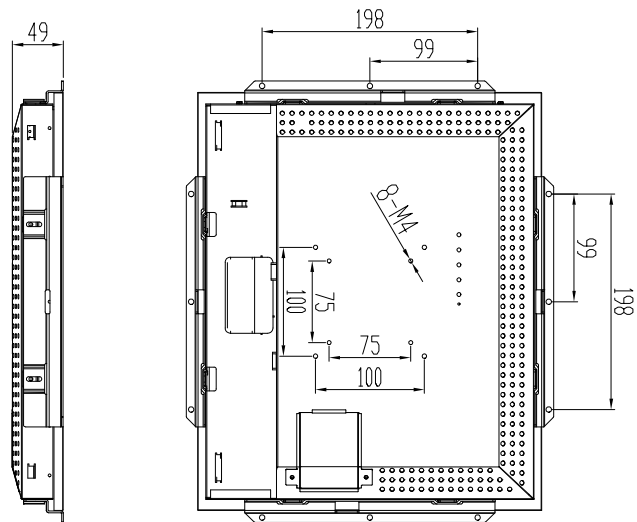
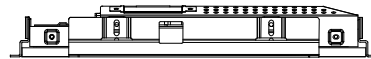
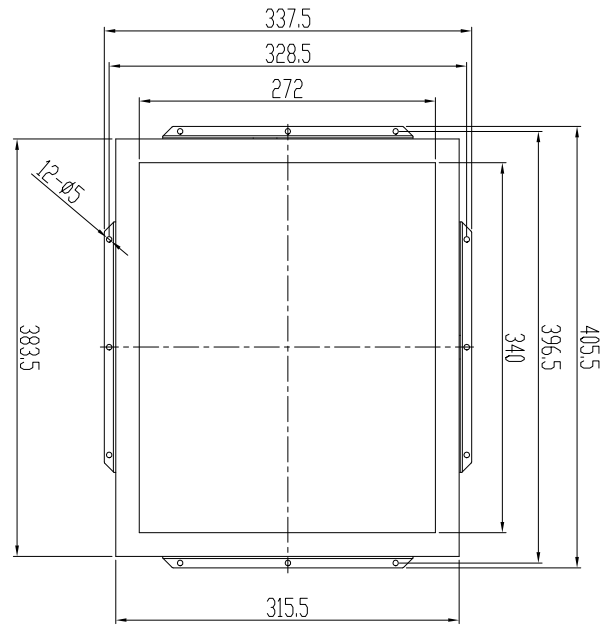
World Leading  
**GENERAL TOUCH**  
Touch Solutions  
Provider

# TouchMonitor Datasheet

Open Frame OTL173

## OTL173 Drawing

The mounting holes are subject to change according to customer requirement for Large OEM project



World Leading  
**GENERAL TOUCH**  
Touch Solutions  
Provider

# TouchMonitor Datasheet

Open Frame OTL173

## *Available Touchscreen options*

Saw Touchscreen Type	DustPro (IP6X Bezel seal)
	WaterPro (IP64 Bezel Seal)
	SafeTouch
Glass Type Thickness	Normal Strength 4mm
	Tempered Strength 6mm
Surface Treatment	Clear (polished)

## *Accessories*

Serial and USB cable  
 VGA Video cable  
 DVI video cable (Optional)  
 Power Supply Adaptor  
 Power Lead (US, EU or UK type)  
 Software CD  
 User Manual (English only)

## *Typical Applications*

Gaming/Casino Systems  
 Outdoor and indoor Kiosks  
 Entertainment  
 Transport and Ticketing  
 Hospitality  
 Banking  
 Customised Solutions

World Leading  
**GENERAL Touch Solutions**  
 Provider

# TouchMonitor Datasheet

Open Frame OTL173

## Specification

Model	OTL173	
Description	17" TFT Open Frame Touch Monitor	
Case/Bezel Colour	Black	
Touchmonitor Performance	Standard	
Display Type	4:3 Ratio 17" Active Matrix TFT LCD	
Active Display Area	338mm x 270mm	
Native Resolution	1280 x 1024 @ 60Hz	
Synchronization Range	30-80 KHz horizontal, 60-75 Hz Vertical	
Pixel Pitch	0.264 x 0.264 mm	
Pixel Response Time	Rise + Fall (Typically)	8 ms
Plug and Play	VESA DDC 1/2B	
On Screen Display (OSD)	Internal Interface Cable	
Colours	16.7 million	
Brightness (LCD Panel)	250 cd/m2	
Contrast Ratio	Typically	1000:1
Viewing Angle	Horizontal (left/right)	160° (80°/80°)
(From Centre, CR>=10)	Vertical (up/down)	160°(80°/80°)
Backlight Lamp life	Hrs to ½ brightness	50,000
Input Video Format	Analog(VGA)/optional DVI	
Touch Technology	Surface Acoustic Wave (SAW)	
Touchscreen Interface	Dual Serial/USB	
Touch Response Time	Serial/USB	10.4ms/10ms
Touch Sensitivity	Fixed	
Monitor Dimensions	406 x 383 x 49(mm)	
Shipping Carton Dimensions	550 x 455 x 190(mm)	
Weight (approximately)	Monitor/Shipping	5.6kg/10kg
Mounting Options	Rear Mount, VESA 75 & 100mm, included	
Power Supply	External: 100-240VAC, 50-60 Hz	
Power Consumption	50 Watts Max	
Temperature Range	Operating:0°C-40°C, Storage:-20°C-60°C	
Relative Humidity	Non Condensing	Operating:20%-80%, Storage 10%-90%
Warranty*	3 years *	
Agency Approvals	FCC, CE,CCC, RoHS	

\*Except for LCD panel 1 year

GeneralTouch Technology Co., Ltd  
 NO.6 Keyuan South Road, High-Tech Zone,  
 Chengdu, China  
 Zip Code: 610041

Tel: (86)28-85124114  
 Fax: (86)28-85124115

GeneralTouch Technology-USA Co., Ltd  
 11860 Goldring Road, Unit A, Arcadia, Ca91006, USA

Tel: (626)359-3412  
 Fax: (626)359-3464

Email: sales@generaltouch.com

GeneralTouch Technology Co. Ltd. reserves the right to change or update, without notice, the information contained in this document and to discontinue or limit the production and distribution of any products.

*Touch Your IMAGINATION Today*