

# TouchMonitor Datasheet

Rear Mount RTL193-A

## **19" Rear Mount TouchMonitor (High Performance)**



World Leading  
**GENERAL TOUCH**  
Touch Solutions  
Provider

## 19" Rear Mount TouchMonitor

GeneralTouch's Rear-Mount LCD monitors are designed for easy integration into kiosks, gaming and amusement products where compact displays are required. Being totally designed in house by GeneralTouch, all aspects of the design from the mechanical parts to future upgrading of the LCD panels can be controlled so as not to change the overall form, fit and function which in turn means no external changes for our customers.

The RTL193-A features pending IP64 glue seal at bezel edge to protect against dirt, dust, spill & liquids.

When design space is limited, the RTL193-A's slim profile and optional mounting solutions make it the ideal choice.

### **Features**

Slim profile with unique narrow borders

Long lasting product cycle: Mechanical parts controlled in house by GeneralTouch so that future upgrades do not bring external size changes

Multiple mounting options including Rear Mount and VESA mounting

Supplied with GeneralTouch's unique SAW touch screens

Fast Touch response time

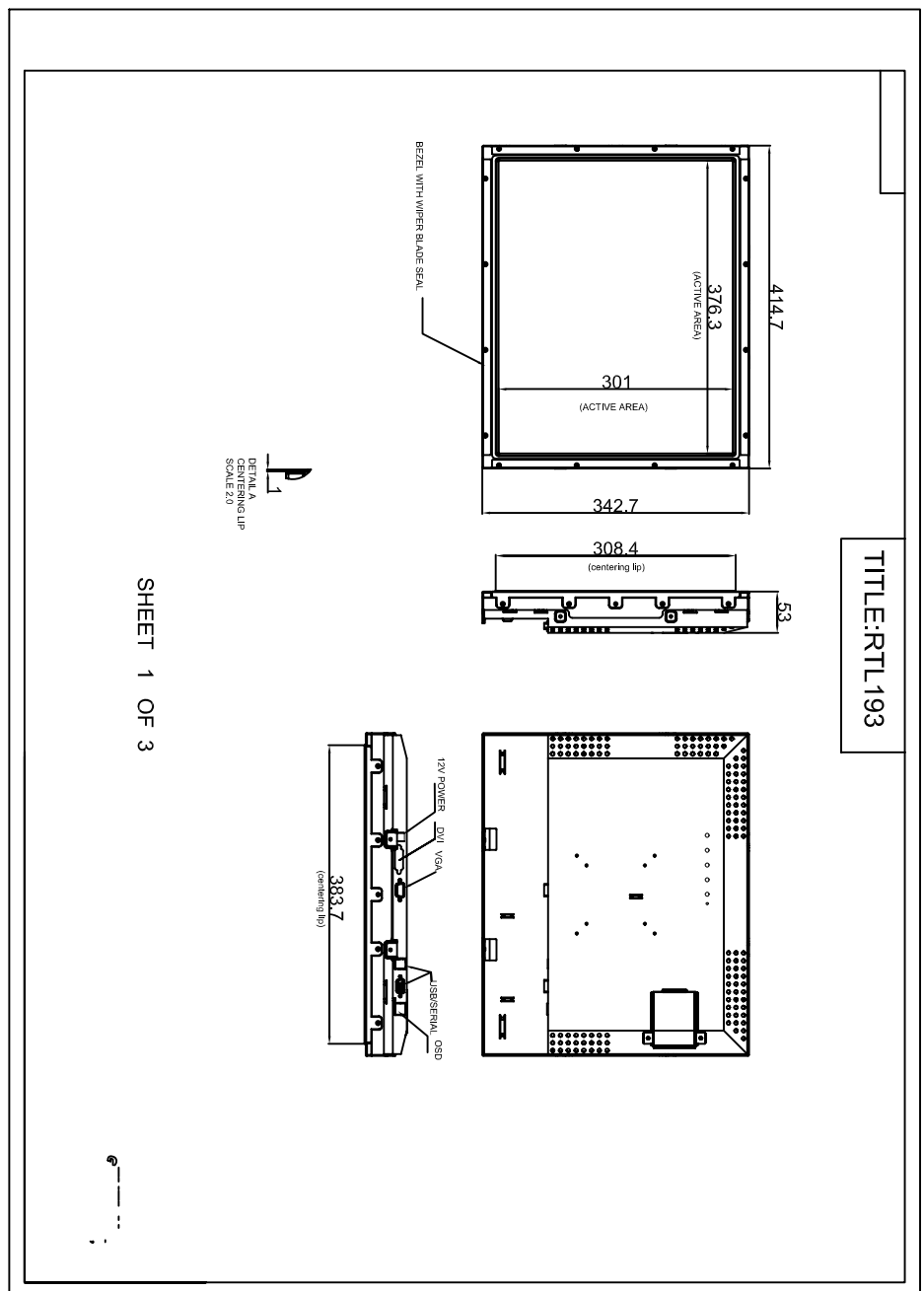
Supplied with Serial and USB touch interface

Multilingual and detachable On Screen Display (OSD)

# TouchMonitor Datasheet

Rear Mount RTL193-A

## RTL193-A Drawing

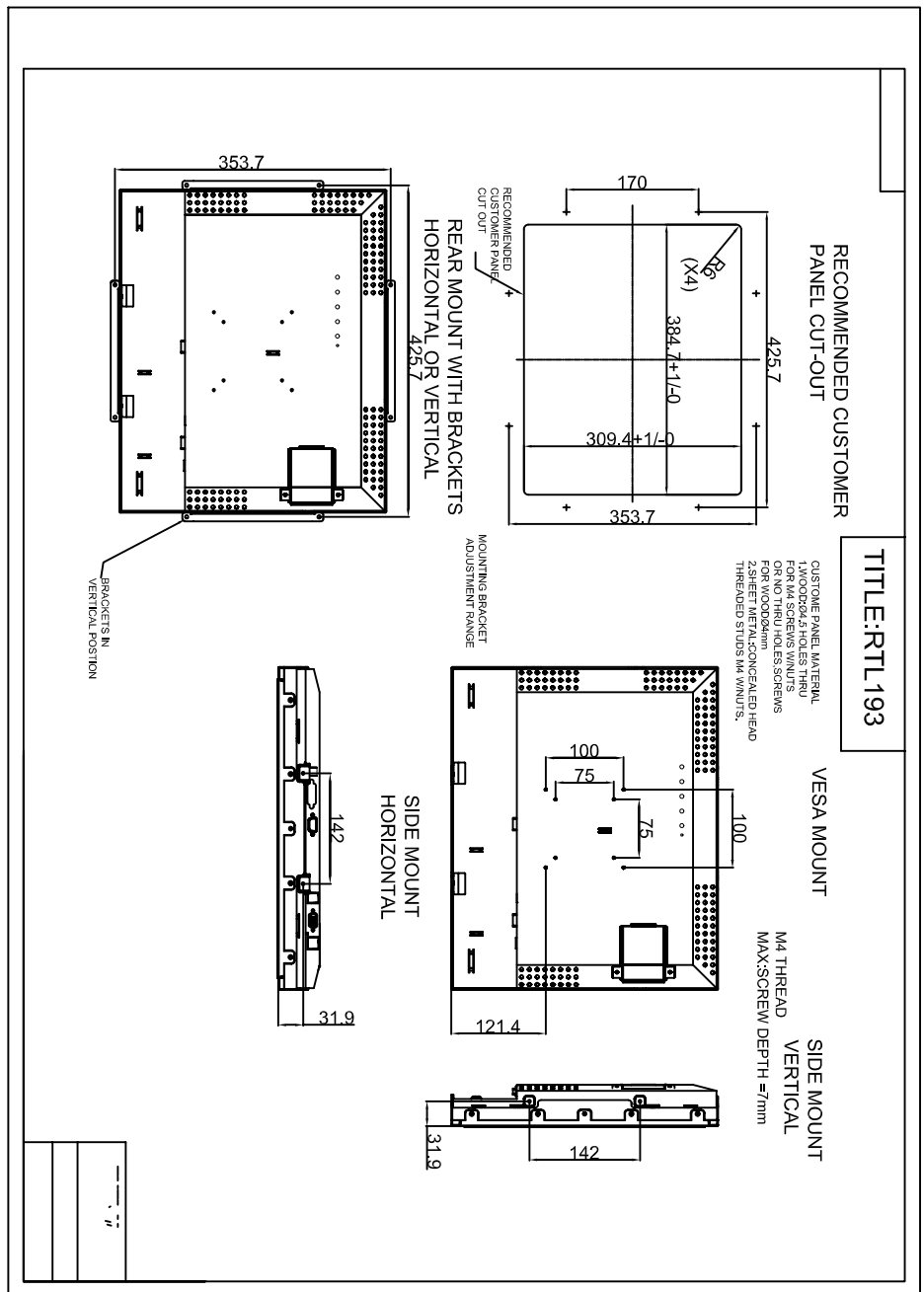


World Leading  
**GENERAL Touch Solutions**  
Provider

# TouchMonitor Datasheet

Rear Mount RTL193-A

## RTL193-A Drawing



World Leading  
**GENERAL Touch Solutions**  
Provider

# TouchMonitor Datasheet

Rear Mount RTL193-A

## *Available Touchscreen options*

Saw Touchscreen Type	BevelTouch
Glass Type Thickness	Normal Strength 6mm
Surface Treatment	Clear (polished)

## *Accessories*

Serial and USB cable  
VGA Video cable  
DVI video cable(Optional)  
Power Supply Adaptor  
Power Lead (US,EU or UK type)  
Software CD  
User Manual (English only)

## *Typical Applications*

Gaming/Casino Systems  
Information Kiosks  
Entertainment  
Self Service  
Industrial

World Leading  
**GENERAL Touch Solutions**  
Provider

# TouchMonitor Datasheet

Rear Mount RTL193-A

## Specification

Model	RTL193-A	
Description	19" TFT Desktop Touch Monitor	
Case/Bezel Colour	Black	
Touchmonitor Performance	High	
Display Type	4:3 Ratio 19" Active Matrix TFT LCD	
Active Display Area	376mm x 301mm	
Native Resolution	1280 x 1024 @ 60Hz	
Synchronization Range	30-80 KHz horizontal, 60-75 Hz Vertical	
Pixel Pitch	0.294 x 0.294 mm	
Pixel Response Time	Rise + Fall (Typically)	25ms
Plug and Play	VESA DDC 1/2B	
On Screen Display (OSD)	Internal Interface Cable	
Colours	16.7 million	
LCD Brightness	250 cd/m2	
Contrast Ratio	Typically	1000:1
Viewing Angle	Horizontal (left/right)	178° (89° x 89°)
(From Centre, CR>=10)	Vertical (up/down)	178° (89° x 89°)
Backlight Lamp life	Hrs to ½ brightness	50,000
Input Video Format	Analog(VGA)/optional DVI	
Touch Technology	Surface Acoustic Wave (SAW)	
Touchscreen Interface	Dual Serial/USB	
Touch Response Time	Serial/USB	10ms/6.6ms
Touch Sensitivity	Adjustable	
Monitor Dimensions	425.7x353.7x53(mm)	
Shipping Carton Dimensions	530x460x195mm	
Weight (approximately)	Monitor/Shipping	4.6kg/7kg
Mounting Options	Rear Mount, VESA 75 & 100mm	
Power Supply	External: 100-240V, 50-60 Hz	
Power Consumption	50 Watts Max	
Temperature Range	Operating:0°C-40°C, Storage:-20°C-60°C	
Relative Humidity	Non Condensing	Operating:10%-90%, Storage 5%-90%
Warranty*	3 years *	
Agency Approvals	FCC, CE, UL, RoHS	

\*Except for LCD panel 1 year

GeneralTouch Technology Co., Ltd  
 NO.6 Keyuan South Road, High-Tech Zone,  
 Chengdu, China  
 Zip Code: 610041

Tel: (86)28-85124114  
 Fax: (86)28-85124115

GeneralTouch Technology-USA Co., Ltd  
 11860 Goldring Road, Unit A, Arcadia, Ca91006, USA

Tel: (626)359-3412  
 Fax: (626)359-3464

Email: sales@generaltouch.com

GeneralTouch Technology Co. Ltd. reserves the right to change or update, without notice, the information contained in this document and to discontinue or limit the production and distribution of any products.

World Leading  
**GENERAL**  
 Touch Solutions  
 Provider