

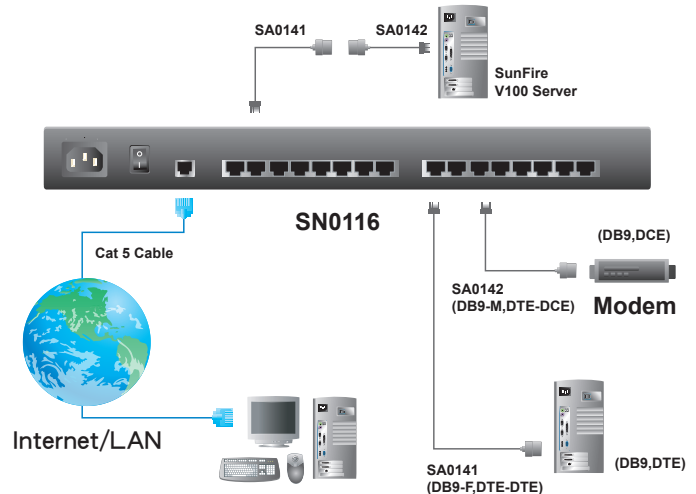
ALTUSEN™ SN0108/SN0116

8/16-Port Serial Over the NET™

The SN0108 / SN0116 Serial over the NET is a control unit that provides remote serial access to a maximum of eight (SN0108) or sixteen (SN0116) servers or other serial IT devices (hubs, routers, power management devices, etc.).

Via TCP/IP connection, up to eight/sixteen users can logged in simultaneously from any computer connected to the Internet, whether it is down the hall or half way across the world. Each User is able to control a separate port thus all eight or sixteen attached devices can be accessed concurrently.

Diagram



Features

■ Complete Centralized Remote Serial Management:

- Remote serial access over the Internet for up to 8 (SN0108) or 16 (SN0116) servers or other serial IT devices
- Works in tandem with other ALTUSEN / ATEN appliances — such as the PN0108 and PN9108 — allowing administrators to manage a wide range of data center devices through IP connections
- Remote access to Serial over IP appliances, and attached devices, in centralized manner

■ Security:

- Multi level secure user logins
- Port-specific access rights
- Supports Active Directory via CC Management
- Supports RADIUS

■ Convenient Access:

- Browser access with an intuitive GUI
- Telnet client – SSH, Telnet and third party client (PuTTY, etc.) compatible; file-based session logging, cut and paste, print screen, session history, macro support, plus a wide range of terminal emulations
- Console terminal
- Direct port addressing — via SSH to any Serial Over IP port (bypassing the SN0108 / SN0116)
- Dial in Modem and Direct Access via serial applications (such as HyperTerminal and PPP), or IP applications (such as SSH and Telnet)
- Modem sharing capability via IP forwarding (Modem support)

■ Sun Ready:

- Hardware break suppression ensures uninterrupted Solaris server operation

■ Network Interfaces:

- TCP/IP, UDP/IP, HTTP, HTTPS, NTP, SNMP, Telnet, SSH, SSL, PPP
- 10Base-T/100BaseTX auto sense, DNS, DHCP, ARP, RADIUS, Ping

■ Serial Connectivity:

- VT320 support – backward compatible to VT52 (VT52, 100, 220)
- Hardware and software flow control
- Real COM port support, Raw TCP Mode support

■ Alarms and Alerts:

- Client applications
- Buzzer
- SNMP Traps

■ OS Support:

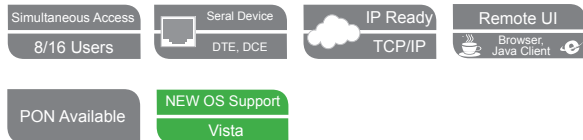
- Windows, Mac, Sun, Linux, Unix, AIX, DOS 6.2+

■ Code Set Support:

- ISO646 — US (US ASCII), ISO8859 - 15 (Latin -9)

■ General:

- Hot-pluggable — add and remove servers without rebooting
- Rack mountable in 1U system rack
- Easy setup — plugging cables into their ports is all it takes



Specifications

Function		SN0108	SN0116
Connectors	To Devices	8 x RJ-45 Female (Black)	16 x RJ-45 Female (Black)
	To LAN	1 x RJ-45 Female (Black)	
	Power	1 x 3-prong AC Socket	
Switches	Power	1 x Rocker	
	Reset	1 x Semi-recessed Pushbutton	
LEDs	Link (LAN)	1 (Green)	
	10/100 Mbps	1 (Orange/Green)	
	Power	1 (Blue)	
	RS-232 Ports	8 (Green)	16 (Green)
I/P Rating	100-240VAC; 50/60Hz; 1A		
Power Consumption	120V/8W; 230V/8W		
Environment	Operating Temp.	0-40 °C	
	Storage Temp.	-20-60 °C	
	Humidity	0-80% RH, Non-condensing	
Physical Properties	Housing	Metal	
	Weight	3.30 kg	3.40 kg
	Dimensions (L x W x H)	43.72 x 21.40 x 4.40 cm (19"/1U)	

* The specifications and pictures are subject to change Without notice.