



800/ 805 SERIES INSTALLATION MANUAL

Features	03
Specifications	04
Quick-Start	05
Hardware Installation	
800TSV/ 800YV/ 805TSV/ 805YV Models	07
Software Installation	
Touchscreen Driver Installation	10
Additional Info	15
Owner's Record	
Owner Record and Warranty Information	16

3 | Features

Model Comparison Chart

	800 YV	800 TSV	805 YV	805 TSV
Video (RCA) Inputs	2	2	2	2
VGA (D-Sub 15) Input	1	1	1	1
AUDIO (RCA) Inputs	Mono	Stereo	Mono	Stereo
Built-in Speakers	●	●	●	●
High Quality Scaling	●	●	●	●
High Quality Anti-aliasing	●	●	●	●
Auto Power On	●	●	●	●
Touch Screen	○	●	○	●

● Standard
 ○ Not Available

Features

- For In-Car Computing, PC, Server, GPS, and various VGA Use
- 5-wire Resistive Touch Screen (USB)
- Multi-Monitor Touchscreen Support
- VGA Input (15 pin D-SUB) x 1
- Video Input x 2
- Audio Input/ Built-in Speaker
- NTSC/ PAL Mult-System
- 4:3 Aspect Ratio
- High Resolution Display - up to 1024 x 768
- Upgraded High-Brightness LED
- Adjustable backlight level for night-time use
- Realtek High Performance Image and Video Signal Processor
- AISS- Advanced Image- Scaling and Shaping

- Last Input memory
- Last Power Setting memory
- IR Remote Control
- Auto power-on upon signal detection
- Automatic display adjustment
- On Screen Display Control
- Stand: -5° ~ +70° / Tilt Adjustment
- 26-Pin heavy-duty connector
- Anti Glare Coating
- Supports 9V ~ 30V DC
- "E" Mark Certified for Automotive use

Specifications

Display Specifications:

- Screen Size: Diagonal 8" (4:3)
- Physical Resolution: 800 (H) x 600 (V)
- Pixel Pitch: 0.0675 (H) x 0.2025 (V) mm
- Dot Resolution: 2400 x 600 = 1,152,000 (dots)
- Supported Resolution: 800 x 600 ~ 1024 x 768
- Supported Refresh Rate: 60 ~ 75Hz
- LCD Panel Brightness: 350 cd/m²
- Response Time: 25ms
- Contrast Ratio: 400 : 1
- Viewing Angle: Vertical: 120 / Horizontal: 140 (Non Touch)
- Colors: 18-bit (262,144 Colors)

Physical Specifications:

- Video Source Input
 - RGB analog male connector (15-Pin D-SUB) x 1
 - RCA composite video female connector x 2
- Audio Source Input
 - RCA audio female connector x 2
- Touch Panel I/O
 - USB connector x 1 (800/ 805 TSV Only)
- Power Source Input
 - Single 12V DC_IN (Supports 9V ~ 30V DC)
- External Buttons Input
 - OSD buttons for Power / Mode / Menu / Right / Left / Dimmer
 - PWR button for power switc
- Dimension
 - 800 : 8.98" (W) x 6.46" (D) x 1.42" (H) In
 - 805 : 7.87" (W) x 6.42" (D) x 1.44" (H) In
- Weight :
 - 800 : 2.64 lbs
 - 805 : 1.81 lbs

Electrical Specifications:

- Operating Voltage Range: DC 9V~30V, 1A
- Power Supply: DC 12V
- Power Consumption:
 - Suspend mode <2W (Max)
 - Continue mode <14W (Max)

Other Specifications:

- Operating Temperature: 32°F ~ 122°F
- FCC, CE, E13 Certification
- 18 Month Warranty

5 | Quick-Start



Optional Mounting Stand

Step1.
Slide Monitor into optional mounting stand



Step2.
Secure "Height" position by adjusting Knob

Step3.
Secure "Tilt" position by adjusting knob



U Type Stand (800 TSV ONLY)

Secure "Tilt" position by adjusting knob



Create VGA Source

Step1.
Attach the 26-Pin connector to the back of the monitor



Step2.
Attach the D-Sub 15-Pin connector to your computer's analog VGA output connector



Create Power Source
Insert Power Adapter as shown

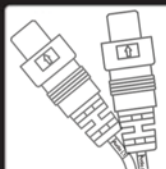


Create Audio / Video Source

Step1.
Attach your "video source one" (e.g.VCR, video Game Console) to the Yellow RCA connector marked Video 1.



Step2.
Attach your "video source two" (e.g. Rear View camera) to the Yellow RCA connector marked Video 2.



Step3.
Attach your "audio source" to the white/red RCA connector. The sound will be output through the monitor's internal speaker.



Step4.
Attach your "pc source" to the back VGA connector.



Step5.
Attach your "pc source" to the back earphone connector.



Touchscreen Installation (800TSV/ 805TSV Only)

Step1.
Install the Touchscreen driver from the included CD disk. Please follow the installation instruction on page 10.



Step2.
Attach the USB plug to your computer's USB connector.

Congratulations

Your monitor is now ready for use.



Secure knob Installation

Please use the attached knob and screws to fasten the the cable on the rear of cover.

7 | Hardware Installation

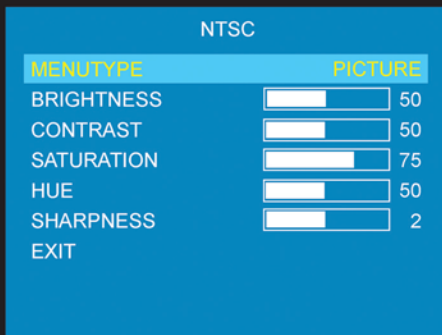
External Buttons, Hot keys description:

Note: The Hot keys are only available while the OSD menu is ON.

- ⏻ - Press this button to turn on or off the power of monitor.
- 🔊 - This button lets you select the internal AV1/AV2/PC input.
- ☑ - Stands for Menu. This button is for OSD menu on/off toggling.
- ▶ - Stands for Increase. Use this button to increase value while OSD menu is on. Use this button as a hot key to increase volume directly when OSD menu is off.
- ◀ - Stands for Decrease. Use this button to decrease value while OSD menu is on. Use this button as a hot key to decrease volume directly when OSD menu is off.
- ☼ - This button controls display brightness for optimum volume viewing.

On Screen Display functions "Picture" description:

In AV1/AV2 input Mode (There are two OSD in the AV1/AV2 mode):



NTSC	
MENUTYPE	PICTURE
BRIGHTNESS	<input type="range"/> 50
CONTRAST	<input type="range"/> 50
SATURATION	<input type="range"/> 75
HUE	<input type="range"/> 50
SHARPNESS	<input type="range"/> 2
EXIT	

Menu Type

-Switch menu type; Picture Mode or Function Mode

Brightness

- Adjust brightness by pressing the Increase (▶)/Decrease (◀) buttons. Increase the number for higher brightness. Decrease the number for lower brightness.

Contrast

- Adjust contrast by pressing the Increase (▶)/Decrease (◀) buttons. Increase the number for higher contrast. Decrease the number for lower contrast.

Saturation

- Adjust saturation by pressing the Increase (▶)/Decrease (◀) buttons. Increase the number for higher saturation. Decrease the number for lower saturation.

Hue

- Adjust hue by pressing the Increase (▶)/Decrease (◀) buttons. Increase the number for higher hue. Decrease the number for lower hue.

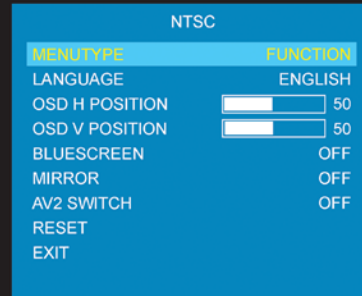
Sharpness

- Adjust sharpness by pressing the Increase (▶)/Decrease (◀) buttons. Increase the number for higher sharpness. Decrease the number for lower sharpness.

8 | Hardware Installation

Secondary On Screen Display functions description:

The Secondary OSD can be turn on by pressing " " while Primary OSD is ON by pressing " " twice (press " " once more when the Primary OSD is on).



Menu Type

-Switch menu type: Picture Mode or Function Mode

Language

- The original setting is English.

OSD H Position

- Adjust Horizontal position by pressing the Increase (▶)/Decrease (◀) buttons.

OSD V Position

- Adjust Vertical position by pressing the Increase (▶)/Decrease (◀) buttons.

Bluescreen

-No signal input, show blue screen

Mirror

- Set the display mode by pressing the image mirror or not. Good for car reverse monitoring system. Default is Off.

AV2 Switch

- Set whether to have monitor swith to Video Input 2 automatically if a signal is present. Default is Off.

Reset

- Back to the default settings

On Screen Display functions "Picture" description:

In PC input Mode (There are two OSD in the PC mode):

Primary On Screen Display functions description:

The Primary OSD can be turn on by pressing the button " " Adjustments can only be made when video source is present.



9 | Hardware Installation

Menu Type

-Switch menu type; Picture Mode or Function Mode

Brightness

- Adjust brightness by pressing the Increase (▶)/Decrease (◀) buttons. Increase the number for higher brightness. Decrease the number for lower brightness.

Contrast

- Adjust contrast by pressing the Increase (▶)/Decrease (◀) buttons. Increase the number for higher contrast. Decrease the number for lower contrast.

Clock

- Adjust clock by pressing the Increase (▶)/Decrease (◀) buttons. Increase the number for higher clock. Decrease the number for lower clock.

Phase

- Adjust CLK phase alignment by pressing the Increase (▶)/Decrease (◀) buttons. (Image flicker can be avoided by CLK phase adjustment.)

H-Position

- Adjust the Horizontal position on the TV screen frame. Pressing the Increase (▶)/Decrease (◀) buttons.

V-Position

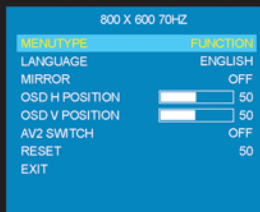
- Adjust the Vertical position on the TV screen frame. Pressing the Increase (▶)/Decrease (◀) buttons.

Auto

- Adjust display automatically.

Secondary On Screen Display functions description:

The Secondary OSD can be turned on by pressing "■" while Primary OSD is ON by pressing "■" twice (press "■" once more when the Primary OSD is on).



800 X 600 70HZ

MENU TYPE	FUNCTION
LANGUAGE	ENGLISH
MIRROR	OFF
OSD H POSITION	50
OSD V POSITION	50
AV2 SWITCH	OFF
RESET	50
EXIT	

Menu Type

-Switch menu type; Picture Mode or Function Mode

Language

- The original setting is English.

Mirror

- Set the display mode by pressing the image mirror or not. Good for car reverse monitoring system. Default is Off.

OSD H Position

- Adjust Horizontal position by pressing the Increase (▶)/Decrease (◀) buttons.

OSD V Position

- Adjust Vertical position by pressing the Increase (▶)/Decrease (◀) buttons.

AV2 Switch

- Set whether to have monitor switch to Video Input 2 automatically if a signal is present. Default is Off.

Reset

- Back to the default settings

Installing Touch Screen Driver for 800TSV/ 805TSV

Here is a walk through of Windows XP Touch Driver Installation. For other operating systems, please go to the Document folder on the Driver CD to view the corresponding Touch Driver setup instruction.

Step1.

Click on Start, Run, and Enter D:\Win2000_XP \Setup.exe (Please change the drive letter corresponding to the drive containing the installation CD). Click **OK**.

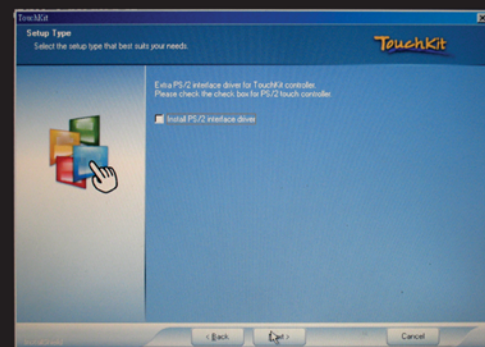


Step2.

The Install Wizard window appears. Click **Next**.

Step3.

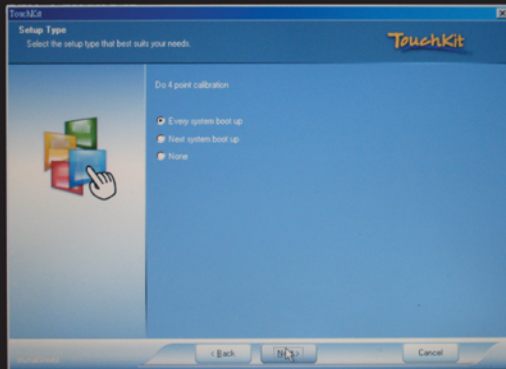
Click **Next** to continue. Please leave the check box next to "PS2 Touchscreen Driver" **unchecked**.



11 | Software Installation

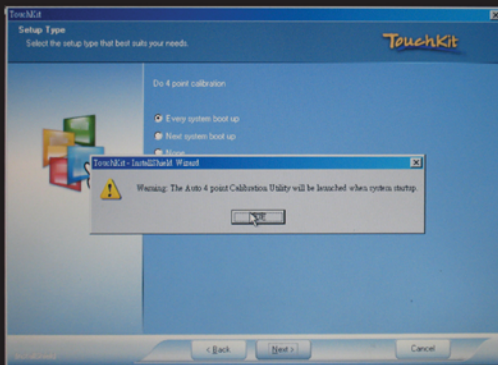
Step4.

Select the Every system boot up.



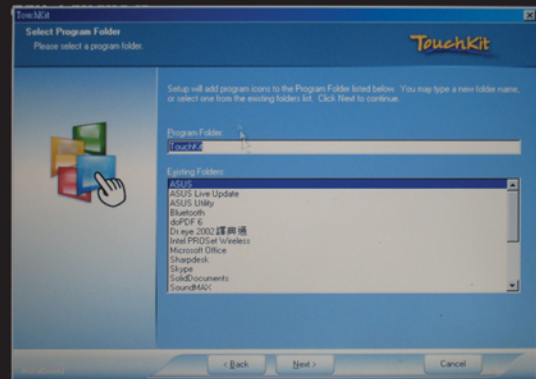
Step5.

Click **Next** to accept the Destination Directory default, shown below. Click on **Browse** to change Destination Directory.

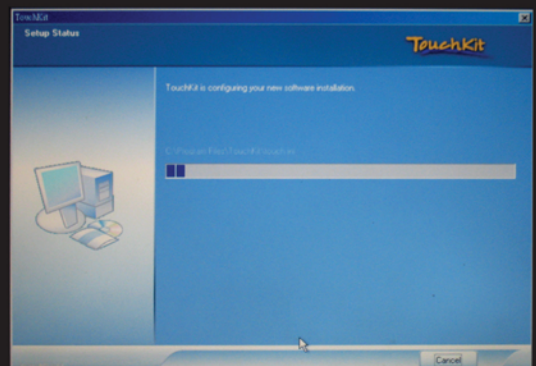


Step6.

Click **Next** to accept the Program Folder default, shown below. Files will then start to be copied to your computer.

**Step7.**

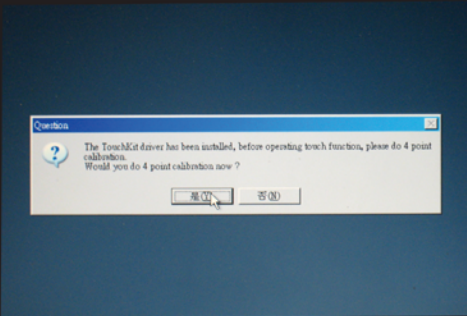
When the warning that says this software has not passed Windows Logo test, please click on **Continue Anyway** to continue the installation. File will continue to be copied to your computer.



13 | Software Installation

Step8.

Click **Finish** to finish the installation. You will be asked to restart your computer.



Step9.

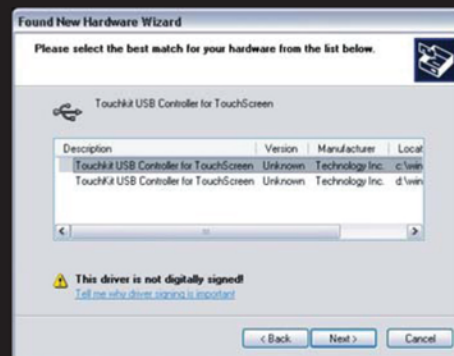
Remove the CD and **Restart your computer**. After Windows XP is finished loading, connect the 800TSV/ 805TSV USB cable to one of your computer's USB Ports.

Step10.

Windows XP will start "Found New Hardware Wizard" automatically upon detection of the USB Touch Controller. Click on **Next** to continue.



Step11.
Click on **Next** to continue.



Step12.
Click Finish to finish Setup. Your Touchscreen is ready to use now. You can click on the icon **Touchkit** located on your desktop to launch the Touchscreen program for various settings and adjustments.

15 | Additional Info.

NOTE

NOTE 1:

If you are trying to connect the monitor to a laptop computer, please make sure to enable the 15-Pin D-SUB external monitor output located at the back of your laptop computer. Some laptop computers have three modes: Laptop Display Only, Laptop Display plus External Monitor, and External Monitor Only. If this is the case, please switch to the External Monitor Only mode.

NOTE 2:

Touch Screen device driver must be installed onto your computer in order for the Touch Screen to become functional. Touch Screen drivers and software for different operating systems can be found in the included CD-ROM disc. You can refer to this manual for a walkthrough of Touch Screen Driver installation under Microsoft Windows XP.

NOTE 3:

The maximum voltage supported by the monitor is 30V DC. Feeding the monitor with higher voltage will damage the monitor and void the warranty. Please use a fused power source if you decide to wire the monitor directly to your car's electrical system. It is also crucial that you check the polarity of the connection.

NOTE 4:

If the monitor is not displaying the VGA signal properly, the VGA signal might be out of range. Please try changing your display refresh rate to 60, 70, 72, or 75Hertz.

NOTE 5:

Please note that the LCD screen is made with high-precision technology. However, black points or bright points of light (red, blue, or green) may appear constantly on the LCD screen, and irregular colored stripes or brightness may appear on the LCD screen. This is not malfunction. (Effective dots: more than 99.999%)

For Technical Support, please contact us at:

Owner's Records

The model and serial numbers are located on the rear of the unit. Please record these numbers in the spaces provided below, as well as the dealer name, address, and telephone number. Please refer to these records whenever speaking to your dealer regarding this product.

Model Number: _____

Serial Number: _____

Dealer Name: _____

Street Address: _____

City: _____

State: _____

Zip: _____

Phone Number: _____

Purchase Date: _____